

FEATURES

Semflex's 50 ohm precision high performance phase equal adapters are designed to have extremely low VSWR and insertion loss. These adapters are used on any type of equipment requiring extremely accurate and repeatable measurements. They are especially useful on network analyzer calibrations.

SPECIFICATIONS

Electrical:

Frequency Range:DC - 34 GHz

VSWR:1.18:1 maximum

Impedance:50 ohms

Insertion Loss:Less than 0.5 dB to 34 GHz

GENERAL

Temperature Range:-65° C to +125° C

Materials:

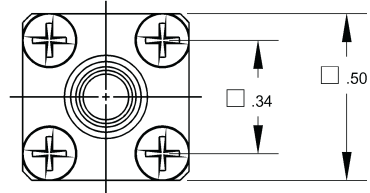
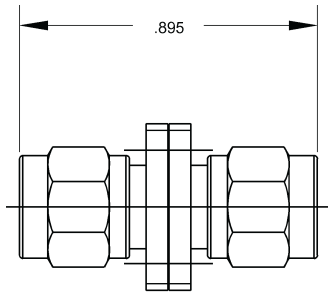
Bodies: Stainless steel

Contacts: Gold plated beryllium copper

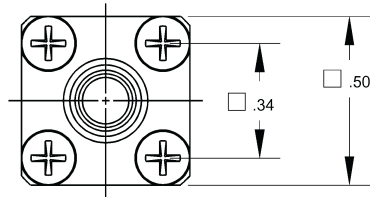
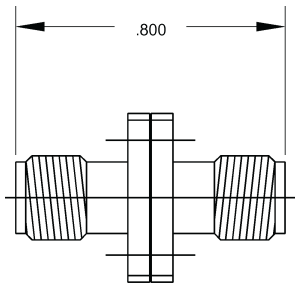
NOTE: Interface and mating dimensions for all connector types listed per MIL-C-39012

MODEL NUMBER	INTERFACE 1	INTERFACE 2	OVERALL LENGTH
30124-01	3.5 mm Male	3.5 mm Male	0.89 ±0.01
30125-01	3.5 mm Female	3.5 mm Female	0.80 ±0.01
30126-01	3.5 mm Female	3.5 mm Male	0.85 ±0.01

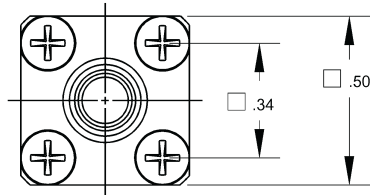
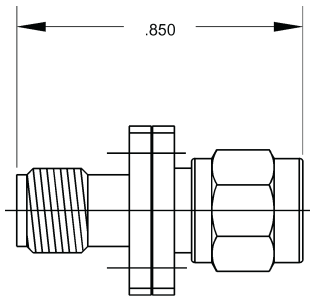




30124-01



30125-01



30126-01